



Creating for the Future

Company Brochure

SWCC Corporation

Greetings

SWCC's Purpose

*Innovating new ideas today.
Becoming the norms of tomorrow.*

We're here to face the challenges resiliently
in this changing world.

With our brilliant technology,
strong passion and sympathetic thoughts,
we ensure the highest quality and reliability of our products.

Not only with our traditional cable
and wire for infrastructure,
but also with our new products
and services to enrich our planet,
we will never stop challenging for a brighter future.

Message from Top Management



Further growth with pride as a manufacturer that supports social infrastructures

In April 2023, we changed our name from Showa Densen to the SWCC Corporation.

Since our launch in 1936, we have released various wires and cables aiming at becoming a company that supports people's lives through infrastructure products. It is our great pleasure to contribute to a society where electricity and telecommunication are "always evident" and we can continue our lives with ease, and we sincerely appreciate our customers continued patronage of our products throughout the years.

Recently, the environment surrounding us has been changing dramatically making us face a number of challenges including environmental issues, disputes, geopolitics, resources, and a shortage of human resources. Against such a background, we, the SWCC group, will not only continue our activities, but also challenge complicated social issues with our technology and ideas, and continue making efforts to be a company capable of providing as many solutions as possible. While enforcing and deepening the three foundation projects of the SWCC group: "Energy & Infrastructure," "Electric Equipment & Components," and "Telecommunication & Industrial Devices," in order to achieve further growth as a business group, we shall challenge new projects centering on core technologies with creativity and speed and expand our new capabilities.

In addition, we are dedicated to being a responsible company continually and will strive to be a business group that is trusted by our valued stakeholders.

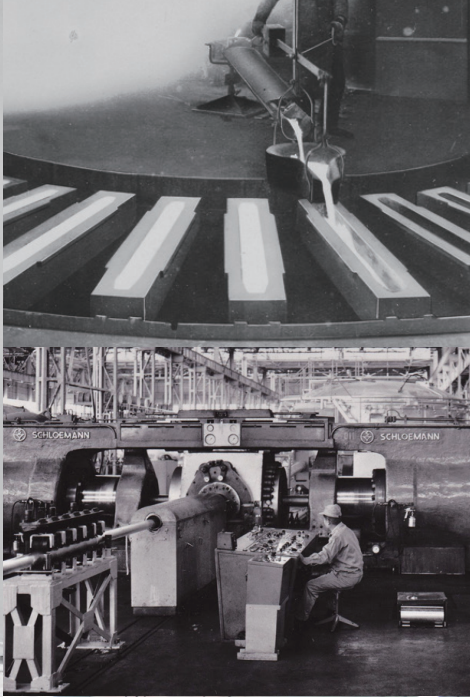
We appreciate your continued support.

SWCC Corporation
CEO, Executive President and Representative Director

Takayo Hasegawa



Corporate Outline



History

- 1936 ● SHOWA ELECTRIC WIRE AND CABLE CO., LTD. is established (Spin off from Tokyo Electric Company: the current TOSHIBA CORPORATION)
- 1937 ● Production and sale of bare copper wire commences
- 1938 ● Production and sale of power and communication cable commences
- 1947 ● Production and sale of vibration-isolation rubber mount commences
- 1949 ● Listed on the Tokyo Stock Exchange
- 1950 ● Construction business (electrical work) commences
- 1951 ● Technical Assistance Agreement is concluded with General Electric Company (GE), USA (polyvinyl formal enamelled wires and power cables)
- 1960 ● Technical Assistance Agreement is concluded with Barry Wright Corporation, USA (vibration isolation with easy levelling mechanisms)
- 1961 ● The first phase construction of the Sagami-hara Plant is completed (production of communication cable commences)
- 1968 ● The first phase construction of the Mie Plant is completed (production of magnet wire commences)
- 1969 ● New electronic component plant is completed
- 1972 ● The first phase construction of the Sendai Plant is completed (production of aluminium wire commences)
- 1973 ● General Technical Assistance Agreement is concluded with Barry Wright Corporation, USA (vibration and shock isolation system)
- 1976 ● Technical Cooperation/ Technology Sales/ Service Agency Agreement is concluded with General Electric Company (GE), USA (continuous casting and rolling of dip forming copper wire rod)
- 1989 ● Transfer of Rights Agreement is concluded with General Electric Company (GE), USA (GELEC technology/ continuous casting and rolling of dip forming copper wire rod)
- 1990 ● Completion of the Ebina Plant (production of heat rollers commences)
- 1995 ● The first phase construction of the Aichi Plant is completed (production of power cables commences)
- 1997 ● ISO 9001 granted as a result of company-wide integration
- 1998 ● The entire production division of the Kawasaki office is transferred
- 1999 ● ISO 14001 granted at all manufacturing points
- 2001 ● UNIMAC, LTD. is established
- 2002 ● EXSYM CORPORATION is established
- 2004 ● ISMS (Information Security Management System) certification is granted (protection of client information)
- 2006 ● Implement corporate separation, shift to a holding company structure
The company name is renamed from SHOWA ELECTRIC WIRE AND CABLE CO., LTD. to SWCC SHOWA HOLDINGS CO., LTD. Headquarters are transferred to Minato-ku, Tokyo
- 2009 ● SHOWA-TEBA (SHANDONG) CABLE ACCESSORIES CO., LTD. is established as a joint venture in Shandong, China for the production of power cable accessories
- 2011 ● Business and capital partnership agreement is made with FUTONG GROUP CO., LTD. China
- 2015 ● SHOWA CABLE SYSTEMS CO.,LTD merges EXSYM Corporation
- 2017 ● SHOWA CABLE SYSTEMS CO.,LTD merges SWCC SHOWA DEVICE TECHNOLOGY CO., LTD and SWCC SHOWA BUSINESS SOLUTIONS CO., LTD. Changed head office location to Kawasaki city, Kanagawa prefecture
- 2019 ● The SWCC Group changed its status from "a company with a board of statutory auditors" to "a company with an audit and supervisory committee."
● Showa Furukawa Cable Co., Ltd is established
● Unimac Ltd. was renamed SWCC SHOWA UNIMAC LTD.
- 2021 ● Change & Growth SWCC 2026, a mid-term business plan of the SWCC Group, and SWCC VISION 2030, a corporate vision, are formulated.
- 2022 ● SWCC Showa Holdings Co., Ltd. transfers its listing from the First Section to the Prime Market of the Tokyo Stock Exchange.
- 2023 ● SWCC Showa Holdings Co. Ltd. absorbs SWCC Showa Cable Systems Co., Ltd. and SWCC Showa Unimac Ltd. SWCC Showa Holdings Co. Ltd. is renamed SWCC Corporation.

What We Aim is to Create a Better Future



Company Profile (As of April 1, 2024)

Trade Name	SWCC CORPORATION *As of April 1, 2023, SWCC Showa Holdings Co. Ltd. was renamed SWCC Corporation.
Date of Establishment	May 26, 1936
Paid-in Capital	24,221,000,000 yen
Registered Head Office	JMF Kawasaki 01, 1-14 Nisshin-cho, Kawasaki-ku, Kawasaki-shi, Kanagawa 210-0024, Japan
Number of employees	Approx. 1,500
Stock Exchange Listing	Tokyo Stock Exchange, Inc. (Prime Market) "5805"
Business areas	Production and sales of electric wires and cables, electric power accessories, magnet wires, optical fiber cables, rollers for information processing equipment, seismic isolators and vibration dampers, vibration isolation rubbers, etc.
Fiscal Year End	March 31, each year

Principal Shareholders (Top 5) (As of March 31, 2024)

The Master Trust Bank of Japan, Ltd. (trust account)	(5,497/18.5)
Custody Bank of Japan, Ltd. (trust account)	(3,961 / 13.3)
JX Metals Corporation	(979/3.2)
Fukoku Mutual Life Insurance Company	(892/3.0)
JPMorgan Securities Japan Co., Ltd.	(872/2.9)
Number of shares possessed (thousand) / Stake (%)	

Business Segments of the Companies

[Energy & Infrastructure Business]	electric wires, electric power cables, electric power equipment, engineering, aluminum wires, electric power accessories, devices for seismic isolation, vibration dampers/isolators, etc.
[Electric Equipment & Components Business]	magnet wires, bare wires, oxygen-free copper, copper alloy wires, automotive electric wires, etc.
[Communication & Industrial Devices Business]	communication cables, optical parts, electric power accessories, wire harnesses, precision devices, etc.
[Others]	networking solutions, logistics, etc.

Board of Directors (As of June 25, 2024)

Directors (except those serving as members of the Audit & Supervisory Board)		Executive Directors	
Representative Director (CEO, Executive President)	Takayo Hasegawa	CEO, Executive President	Takayo Hasegawa
Representative Director (COO, Senior Executive Vice President)	Tetsuo Komata	COO, Senior Executive Vice President	Tetsuo Komata
Directors serving as members of the Audit & Supervisory Board	Yuji Sakakura	Senior Executive Officer	Yukio Kawase
		Senior Executive Officer	Takashi Yamamura
		Managing Executive Officer	Nobutaka Imai
		Managing Executive Officer	Toshiharu Kamijo
		Executive Officer	Kazuhiko Inoue
Outside Director (Audit & Supervisory Committee Member)	Seiichiro Ichikawa	Executive Officer	Kiyoshi Otake
Outside Director (Audit & Supervisory Committee Member)	Takashi Mukuno	Executive Officer	Shigeru Tooyama
Outside Director (Audit & Supervisory Committee Member)	Minako Nishimura	Executive Officer	Nobuyuki Sema
Director (Full-time Audit & Supervisory Committee Member)	Futoshi Yamaguchi	Executive Officer	Yoshiteru Akimoto
		Executive Officer	Yuichi Morishita



Business
Activities

Creating new value, not just infrastructure products

Energy & Infrastructure Business

Since the establishment of the company in 1936, the Energy & Infrastructure Field, as the cornerstone of the SWCC Group, has been supporting the construction of the main arteries of electric power infrastructure in Japan and abroad, and thus economic growth as well as the improvement of living conditions. The Energy & Infrastructure Field produces and sells various types of electric wires that distribute electricity from power plants to households. It also handles products for protecting people and infrastructure from earthquakes, fires, and other disasters.



Extra-high-voltage cables



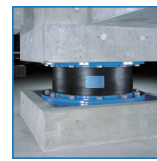
Electric power accessories



Industrial wires and cables



Fire-resistant and heat-resistant wires and cables



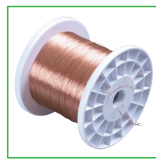
Seismic isolators

Electric Equipment & Components Business

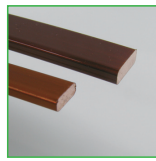
The Electric Equipment & Component Field provides MiDIP, an oxygen-free copper wire manufactured using the sole dip-forming system in Japan, which features high copper purity and outstanding workability, making it suitable for automotive and electronic applications. The Electric Equipment & Component Field also handles windings for motors and coils of various sizes as well as high-strength, high-conductivity, and high-flexibility copper-silver alloy wires.



Oxygen-free copper wires



Copper-silver alloy wires



Rectangular enameled copper wires



Rectangular magnet wires



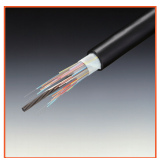
Litz wires



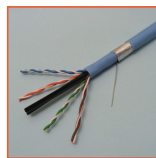
Automotive aluminum cables

Communication & Industrial Devices Business

The Communication & Industrial Device Field produces and sells high-speed, high-capacity communication cables, thus contributing to the development of telecommunications networks in Japan and abroad. Its extensive product portfolio includes wires for the internal wiring of building and factory facilities and those for electronic devices as well as precision devices and other products. Some of these products are available both in Japan and abroad.



Optical fiber cables



LAN cables



Electronic wires



Wire harnesses



Heat rollers



High-speed transmission cables

Other Businesses

Leveraging its core competences cultivated over many years, the SWCC Group is promoting open innovation and partnership. While pursuing new processing technologies, applications, and markets, the SWCC Group is developing products for electric vehicle, factory automation, medical, and other applications as well as superconducting and other cutting-edge technologies.



Wireless power transfer coils



Three-phase coaxial superconducting cables



Networking systems

Office/Production Sites

China

Tianjin

Shandong

Shanghai

Zhejiang

Fujian

Guangdong

Taiwan

Hong Kong

Vietnam

Japan

Expansion of Activities from Japan, China and Asia to All Over the World

Domestic Subsidiaries and Affiliates

SHOWA FURUKAWA CABLE CO., LTD.

Production and sales of general-purpose electric wires and cables for the construction and electrical supply markets, and their accessories and related materials (except the production of aluminum conductors)

FUJI ELECTRIC CABLE CO., LTD.

Production and sales of fire-proof wires, LAN cables, and telecommunications cables

AXIO CORPORATION

ICT solutions (network development, security, development and maintenance of systems, etc.)

SDS CO.,LTD

Sales of electric wires and cables, accessories, wire harnesses, vibration-control equipment, etc.

LOGIS-WORKS CO., LTD.

Transportation by motor trucks, management of warehouses, shipment, delivery, production and sales of drums for electric wires, etc., and disassembly of wires and cables

SHOUKOU EQUIPMENT INDUSTRY CO., LTD.

Production and sales of electric wire and cable accessories, and electricity distribution equipment

SHOWA SCIENCE CO., LTD.

Production and sales of precision anti-vibration units and vibration isolators and dampers; construction related to anti-vibration units and vibration isolators

STEC (SHOWA TECHNICAL CORPORATION)

Design, execution, and supervision of electric works

KAMOME ENGINEERING, INC.

Research, development, and sales of computer software and hardware, and support thereof

(Affiliated companies)

KSD. CO. LTD.

Sales of electric wires and cables, vibration isolation rubbers, and electrical equipment

NST GLOBALIST, INC.

Solutions for specific business areas (medical care, healthcare, personnel administration), innovation businesses (IoT, video)

Overseas Subsidiaries and Affiliates

(Hong Kong)

SWCC SHOWA (H.K.) CO., LTD.

Sales of electric wires, electric cables, and electronic equipment

(Shanghai, China)

SWCC SHOWA (SHANGHAI) CO., LTD.

Sales of electric wires, electric cables, and electronic equipment

(Vietnam)

SWCC SHOWA (VIETNAM) CO., LTD.

Production and sales of copier components

(Zhejiang, China)

JIAXING SHOWA INTERCONNECT PRODUCTS CO., LTD.

Production and sales of wire harnesses

(Dongguan China)

DONGGUAN SHOWA INTERCONNECT PRODUCTS CO., LTD.

Production and sales of wire harnesses

(Fujian, China)

FUQING SHOWA PRECISION ELECTRONICS CO., LTD.

Production and sales of copier components

(Vietnam)

SWCC SHOWA VIETNAM INTERCONNECT PRODUCTS CO., LTD.

Production and sales of wire harnesses

(Affiliated companies)

(Zhejiang, China)

FUTONG SHOWA WIRE & CABLE (HANGZHOU) CO., LTD.

Production and sales of electric wires and cables

(Tianjin, China)

FUTONG SHOWA WIRE & CABLE (TIANJIN) CO. LTD.

Production and sales of electric wires and cables

(Shandong, China)

SHOWA-TBEA (SHANDONG) CABLE ACCESSORIES CO., LTD.

Production and sales of electric power products

(Taiwan)

HUA HO ENGINEERING CO., LTD.

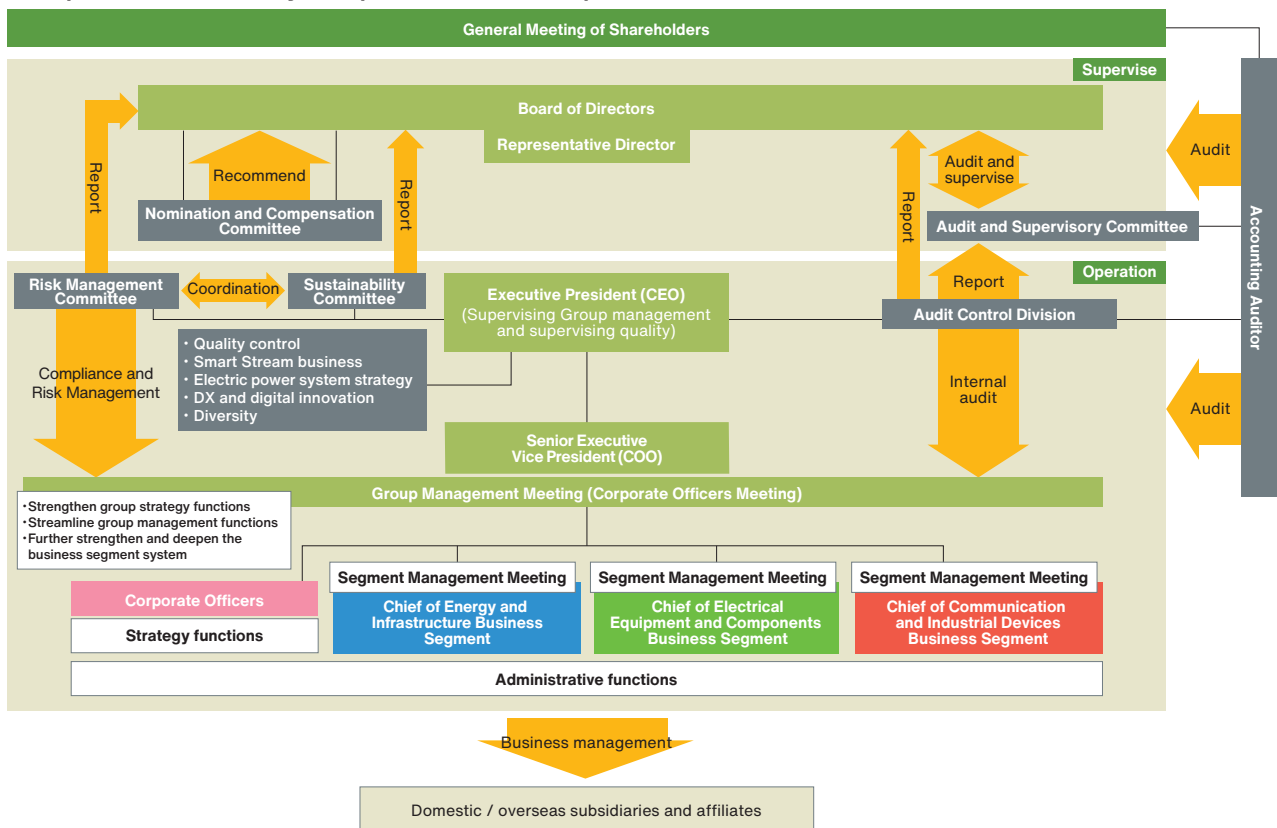
Construction of power cables and communication cables

Corporate Governance Structure and Sustainability

Corporate Governance Structure

In 2019, SWCC Corporation changed its status from “a company with a board of statutory auditors” to “a company with an audit and supervisory committee” under the Companies Act of Japan. As a result of this transition, SWCC Corporation now has a board of directors, an audit and supervisory committee, and an accounting auditor in addition to a shareholders' meeting and individual directors. The purpose of this transition was to transfer substantial authority to directors and executive officers in order to increase the efficiency and speed of business management, while allowing the board of directors to further concentrate on the deliberation of business strategies. In addition, the new corporate governance system grants an enhanced function to the audit and supervisory committee. In order to increase the objectivity and transparency of decisions relating to the nomination of officers and remuneration, SWCC Corporation also has Nomination and Compensation Committee, which have outside directors to seek their active involvement and advice. In addition, SWCC Corporation has risk management and sustainability committees.

Corporate Governance System (As of June 25, 2024)



Basic Sustainability Policy of the SWCC Group

Through trust and innovation, the SWCC Group aims to solve social issues and improve corporate value to create a sustainable and prosperous future society.

- Provide customers with high-quality products and services through superior technology and innovation.
- Promote the spread of clean and green energy and strive to protect the global environment.
- Value our connections with local communities and the value chain in the spirit of “empathy,” “coexistence,” and “co-prosperity.”
- Promote work styles that make the most of individuality and diversity, and work to improve engagement.
- Foster a good corporate culture by enhancing the humanity and ethics of our officers and employees.

Production Sites in Japan

SWCC Corporation Main Production Sites

[Sagamihara Plant]



Location: 1-1, Minami Hashimoto 4-chome, chuo-ku, Sagamihara-city, Kanagawa, Japan

Operation started: December 1960

Area: approx 115,000m²

Main products: electric power equipment, fixing belts, tube rollers, power distribution equipment, bus cables, superconducting wires, devices for seismic isolation, vibration dampers/isolators, sound-absorbing devices, etc.

[Mie Plant]



Location: 1326-1, Ohda, Hokusei-cho, Inabe-city, Mie, Japan

Operation started: May 1968

Area: approx 165,000m²

Main products: bare copper wires, plastic insulated wires, magnet wires, etc.

[Sendai Plant]



Location: 1, Aza Nabekura, Ohaza Funaoka, Shibata-machi, Shibata-gun, Miyagi, Japan

Operation started: August 1972

Area: approx 496,000m²

Main products: optical fiber cables, communication cables, leaky coaxial cables, communication accessories, optical peripheral devices, bare copper wires, aluminum power transmission lines, etc.

[Aichi Factory]



Location: 1-10,2-Gochi Aza, Sawakihama, Mito-Cho, Toyokawa, Aichi, Japan

Operation started: October 1995

Area: approx 170,000m²

Main products: Ultra-high-voltage and high-voltage power cables, underwater cables

Others

SWCC Corporation

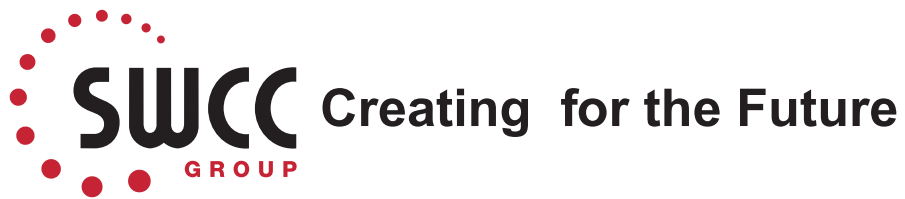
FUJI ELECTRIC CABLE CO., LTD.

SHOWA FURUKAWA CABLE CO., LTD.

Yamamoto Plant, Watarida Engineering Center

Isehara Factory, Kofu Factory, Sendai Factory

Mie Factory, Ibaraki Factory



SWCC Corporation

www.swcc.co.jp
www.swcc.co.jp/eng/

